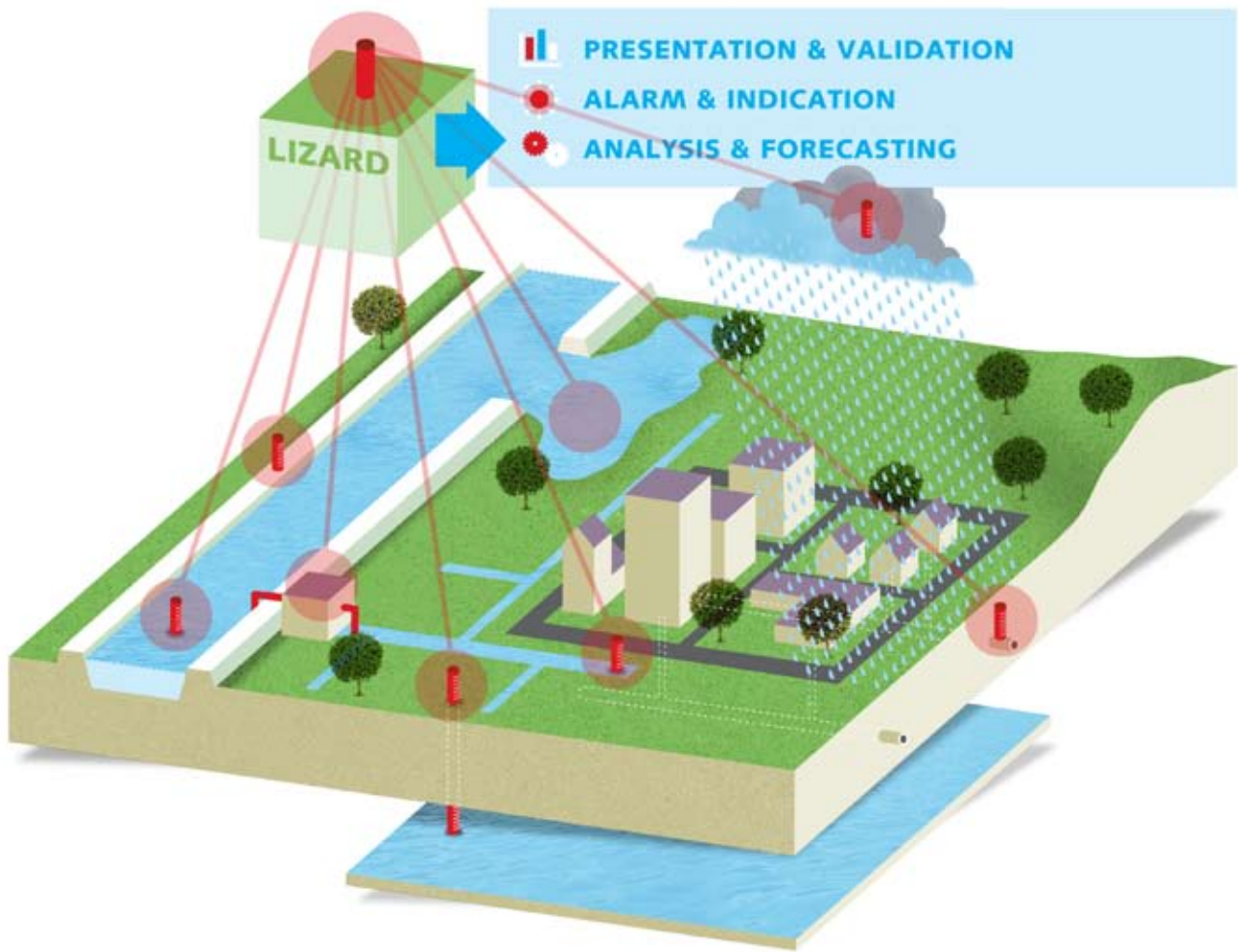


LIZARD

**Your Comprehensive
Information Service**



Our Vision on Information Service

More measurements...

Measuring instruments, telemetry systems and simulation models have been greatly improved the last few years. This makes it possible to access more information faster. (Waste) water systems are equipped with remote instruments measuring ground, surface and sewer water levels, flows and water quality parameters. The measured data is then enhanced with forecasts using water system activity simulation models predicting things such as water levels and flooding depths.

...to know more.

For clear insight into the true functioning of the (waste) water system, it is necessary to convert the measured data into useful information. The kind of information that can enhance understanding of a water system operation and can also validate models and better control structural works. In this

way, better strategic and operational decisions are made and more appropriate measures can be taken.

Lizard, developed from a clear vision

Lizard was developed based on this clear vision of information management. Lizard is a central information system that can be linked with virtually all telemetry systems and simulation models, allowing the data to be translated into useful information for different users.

Working together towards a comprehensive solution

Lizard was developed in close cooperation with Deltares. Lizard-FEWS contains all the functions of the advanced Delft-FEWS software package from Deltares such as data processing, validation, presentation and forecasting and is especially suited for regional and local water management.

Who uses Lizard?

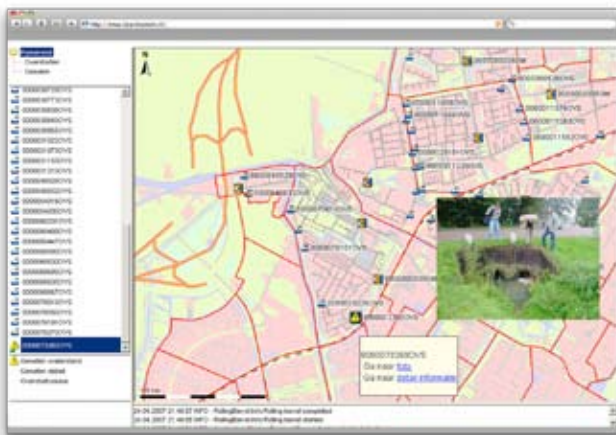
Lizard is used by district water boards and municipalities. Lizard also functions, usually in combination with telemetry systems, as a central database for all measurements of water quantity as well as quality. City councils as well as district water boards also use Lizard as a real-time control system for pumping stations. Finally, Lizard is used as a disaster information system for water issues and floods.

Modular

Lizard has a GIS-oriented interface that is linked to a professional database. In this way you are easily able to access all the data from your office or home. Lizard also provides access to a web interface and online reports, allowing you to stay up-to-date anywhere in the world. In addition to the measurement data, Lizard also manages and presents the characteristics of this data, known as metadata. Lizard has the following modules:

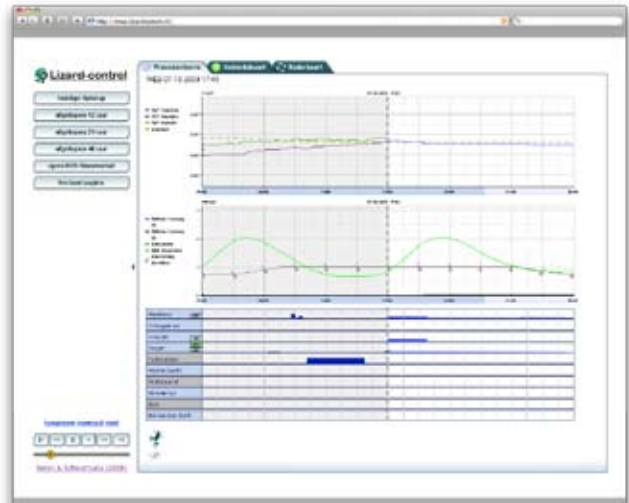
Lizard-FEWS

The Lizard-FEWS module allows you to gain access to data in real time, to validate it and to store it. With this module you are continuously able to predict future water levels and flows using advanced simulation models and precipitation radar images.



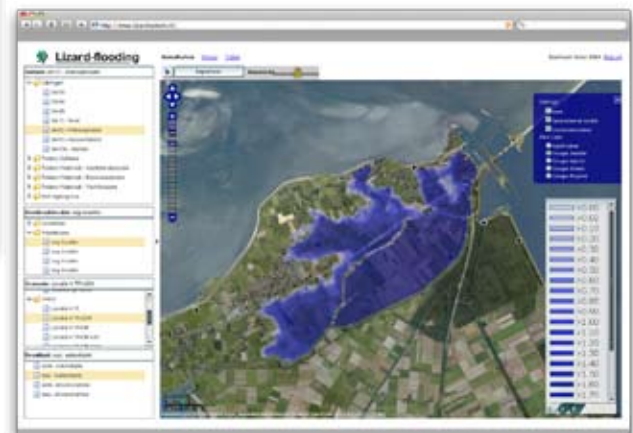
Lizard-control

This module allows you to regulate pumping stations, valves, and dams in your (waste) water system. In this way, measurement data and weather forecasts from various data systems are combined and translated into instructions using advanced control algorithms for the automatic regulation of the structural works.



Lizard-flooding

This module gives you the opportunity to analyze existing flooding animations as well as make your own animations. With this module you are able to make informed decisions during (potential) sea, river, or canal floods. Besides providing information on flooding levels and water flow speed, Lizard also provides information on damage and casualties.



Want to know more?

Lizard can do so much that it is impossible to be described here. For more information about Lizard, please consult the website: www.lizardssystem.nl. If you want to know how Lizard can be used by your organization, feel free to make a no-obligation appointment with an employee of Nelen & Schuurmans.

Technical Specifications

Due to its robust and versatile IT architecture, Lizard is suitable for simple applications as well as complex systems ranging from 10 to 100,000 measuring and regulation sites. Lizard software is a complete client server system that runs on all platforms, including Windows. Lizard is accessible for clients using various interfaces, for thick as well as thin client interfaces such as webbrowsers and PDAs. The server components can be placed on several servers for optimal performance with large and bulky applications. Lizard also works with Citrix or VPN. The servers can be hosted externally. For optimal organizational reliability, the system can run redundantly. An Oracle database is generally used when storing data. Other database formats, however, are supported as well. The database can also be approached directly using, for example, Business Objects. Control and maintenance can be customized to match your specifications: if you wish, the Helpdesk can be consulted seven days a week.

Lizard is a product of

Nelen & Schuurmans



www.nelen-schuurmans.nl

It was developed in partnership with



and the many users of Lizard.